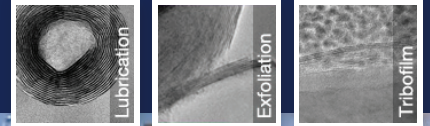


# NanoLub® ADPP-8000 AW/AF

additive for motor oils of diesel power stations



## NanoLub® Power Generation



10-200 litres

## Main advantages of our greasing nano-additives

- Lower fuel consumption
- Higher performance
- Significant motor wear reduction
- Lower service cost
- Important investment cost reduction



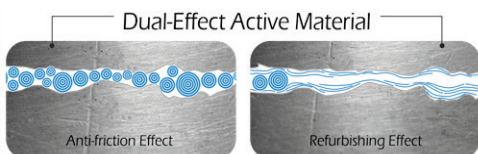
NanoLub® ADPP-8000 AW/AF additive for motor oils of diesel power stations. Reconditioning NANO-additive for motor oils with nano-fullerene particles of tungsten disulfide (WS<sub>2</sub>). Harmless, non-toxic closed particles according to the OECD protocols.

NanoLub® ADPP is a specially developed additive for an improved performance of power stations and for reducing their operation and maintenance cost. It shows excellent properties against extreme pressure (EP), friction (AF) and wearing (AW).

NanoLub® is based on a unique patented technology using multi-layer nano-fullerene particles with solid tungsten disulfide (WS<sub>2</sub>). These unique multi-layer IF-WS<sub>2</sub> nano-marbles are known for their outstanding thermal stability (-273 °C to +500 °C), shock pressure (5,076,000 PSI), and pressure (4,263,000 PSI), thus making them universal under extreme

conditions, including high and ultra-low temperatures, high pressure and vacuum, high load, high rotating speed and corrosion resistance.

Given their size (50-200 nm) and morphology, IF-WS<sub>2</sub> nano-particles easily fill in all metal projections (scratches, micro-cracks, micro-fissures...), while having excellent anti-wear properties. At high loads (<1 GPa), the layers are separated from the marbles and they apply fine protective WS<sub>2</sub> monolayer on the metal surface, which decreases friction and wear between the metals.



### NANOTECH -EUROPE



Distributor: NANOTECH EUROPE s.r.o.  
Address: Nové sady 988/2, 602 00 Brno, Czech Republic  
E-mail: info@nanotech-europe.eu  
Phone: +420 608 887 460  
[www.nanotech-europe.eu](http://www.nanotech-europe.eu)